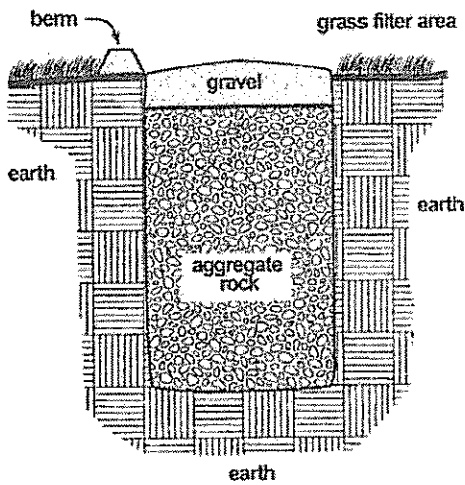


## Infiltration Trench

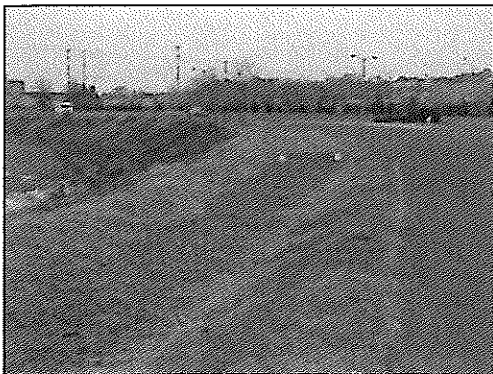
**I**nfiltration trenches are gravel-filled excavations that temporarily store stormwater and allow it to sink into the underlying soil.



Infiltration trenches are classified in two ways:

In dispersed input facilities, runoff from impervious surfaces is directed over a gently sloping grass area before it reaches the facility, to remove large particles that otherwise might cause clogging.

In concentrated input facilities, runoff is transferred to the trench directly from curb inlets, gutters, and pipes.



*The purpose of an infiltration trench is to retain water.*

### MAINTENANCE IS REQUIRED WHEN:

- Standing water is visible in the observation well 48 hours after a rain event.
- Insects and/or odor become problems.
- Wetland vegetation emerges.
- There is visible damage to the embankment (such as sinkholes) or to the mechanical components.
- Trash, leaves, and other debris are visible on the gravel surface.
- Runoff flows across, rather than into, the facility.